

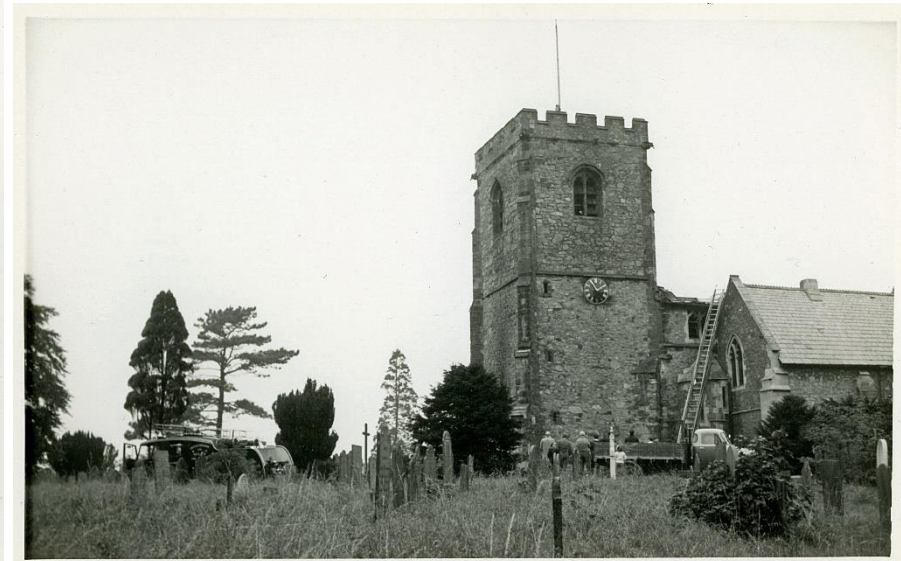
Quorn Church Fire, 24th October 1965

St Bartholomew's Parish Church suffered a severe fire in October 1965. It started in the choir vestry, underneath the bell tower and quickly spread into the main body of the church causing devastating damage. The nave was almost destroyed, the bells in the tower were cracked and the bell ropes, wooden supports, wheels and the clock were all badly affected. It took two years to complete the repairs.

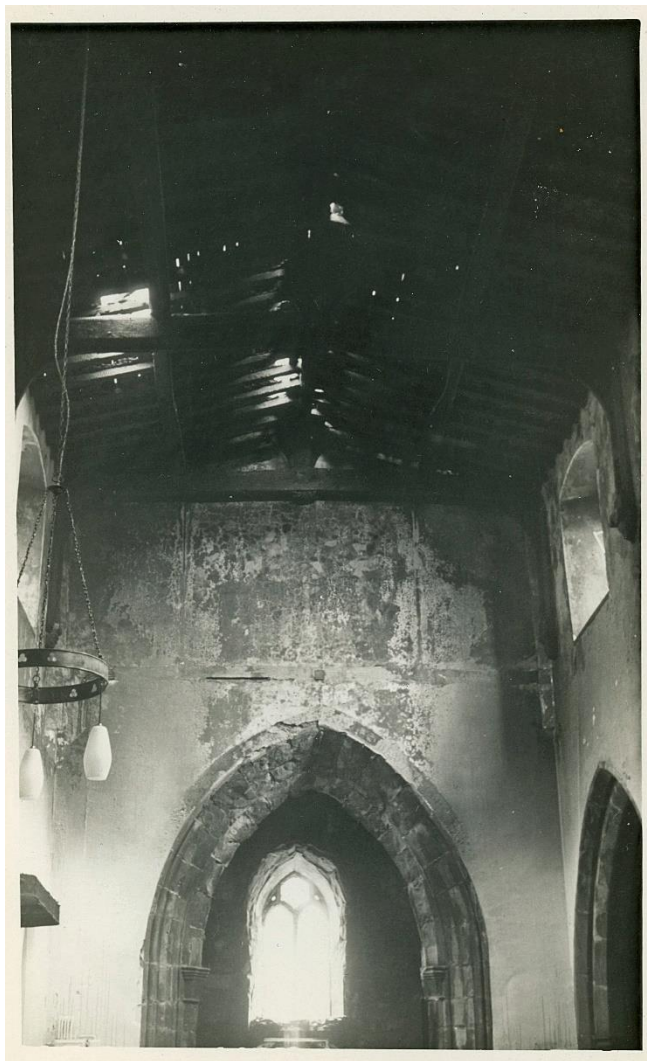
This album was put together from photographs given to the vicar.



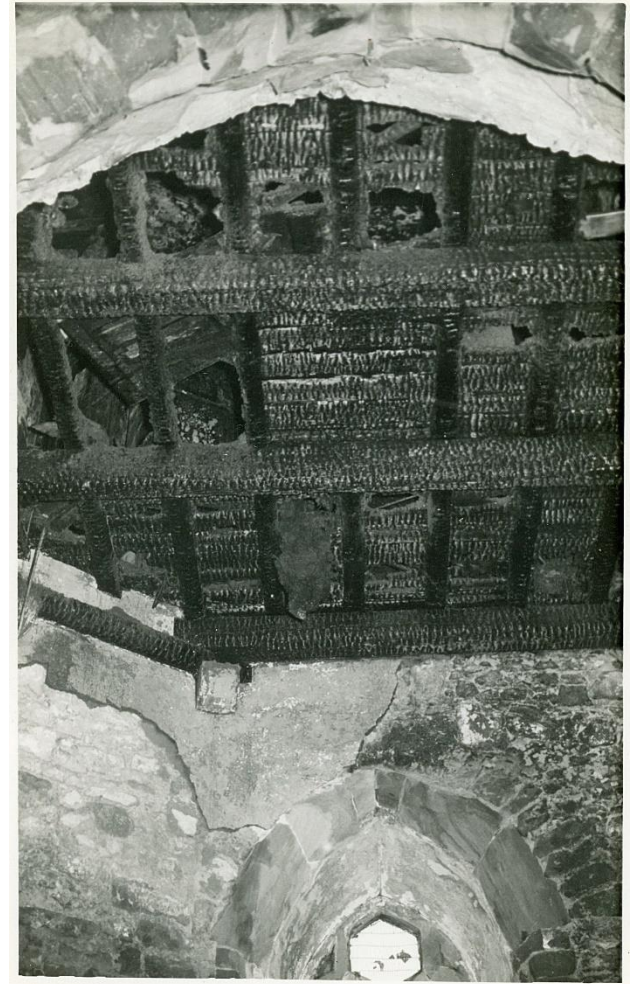
The fire engine outside the Church



Looking to the west, towards the door into the choir vestry



- 1) Looking to the west, towards the door into the choir vestry.
- 2) Looking from outside into the choir vestry.
- 3) Looking up at the ceiling in the choir vestry.





- 1) The organ pipes.
- 2) Looking east down the nave.
- 3) Looking east down the nave to the rood screen.

